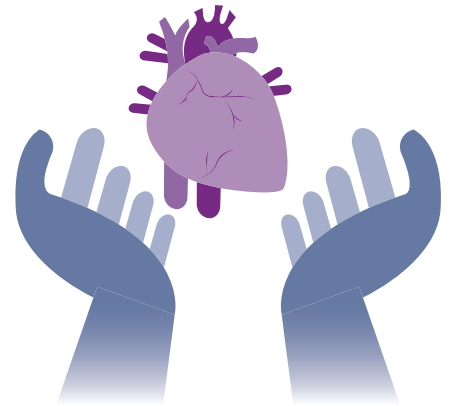


George Seminars

Do high levels of risk factors in childhood predict likelihood of major cardiovascular events in middle age?



When? : Wednesday 3rd July, 5pm - 7pm

Where? : The George Institute for Global Health,
75 George Street, OX1 2BQ

In this special seminar, Professor Terry Dwyer will discuss his work investigating whether risk factors known to predict cardiovascular disease (e.g. high blood pressure and obesity) when experienced during childhood contribute to the occurrence of such potentially life-threatening events in middle age.

Professor Dwyer's talk will be followed by drinks and networking.

No booking required, but if you would like further information please contact: anastasia.bow-bertrand@georgeinstitute.ox.ac.uk

#GeorgeSeminars

